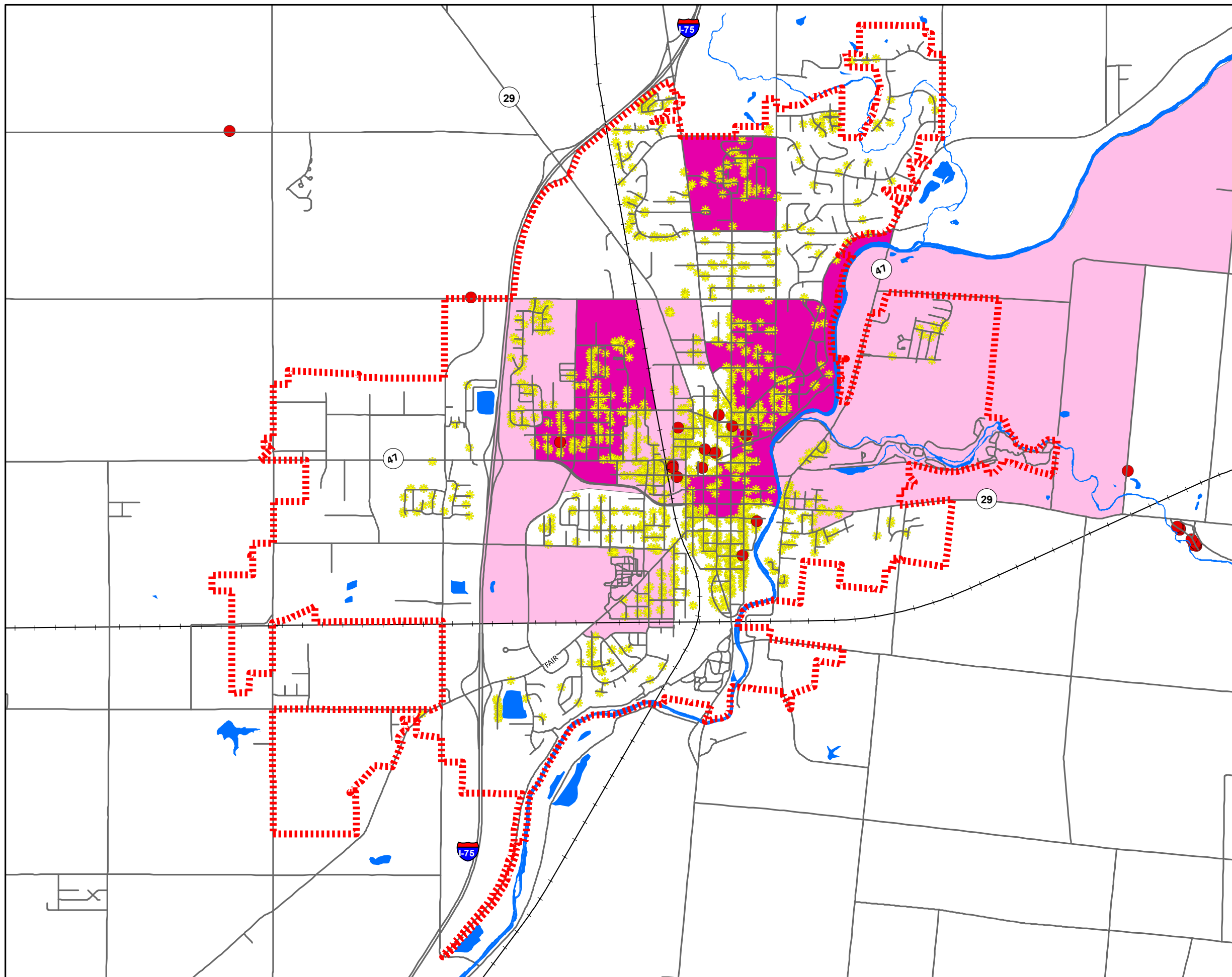


# Residential Vacancies & Condemned Housing



## Legend

- Corp Boundary
- Great Miami River / Open Water
- Streets
- Condemned Housing
- Residential Vacancies (Since 2012)
- % Low-to-Moderate Income Block Groups**
- 51% - 67%
- 67 - 100%

0 0.25 0.5 1 1.5 2 Miles

Source: City of Sidney; Shelby County Auditor; HUD; Reveille

