

Service Line Inspection Guide

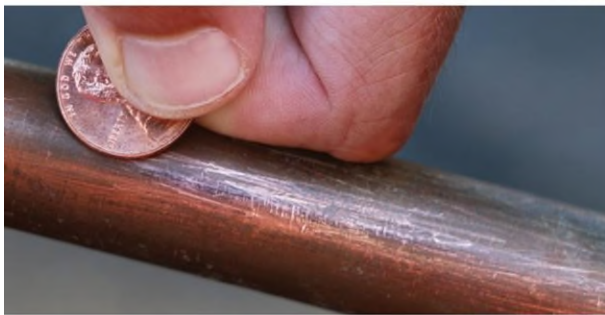
Testing Your Service Line Guidance: The customer-owned service line extends from the curb stop or meter pit into your basement or crawl space. Identification of the type of material used for your service line can be done by using a magnet and a penny. Your service line material should be tested where the line first enters the home, which is typically in the basement or crawl space before the first shut-off valve. If your home is on a slab, it would be coming through your concrete floor.



Lead Pipe



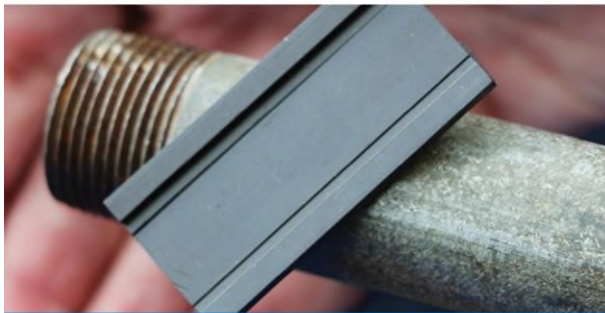
- A magnet will not stick to a lead pipe.
- Scratch the pipe with a coin. If the scraped area is shiny silver and flakes off, the service line is lead.



Copper Pipe



- A magnet will not stick to a copper pipe.
- Scratch the pipe with a penny. If the scraped area is copper in color, like a penny, your service line is copper.



Galvanized Steel Pipe



- If a magnet sticks to the surface, your service line is galvanized steel.
- A scratch test is not needed. If you scratch the pipe, it will remain a dull gray.