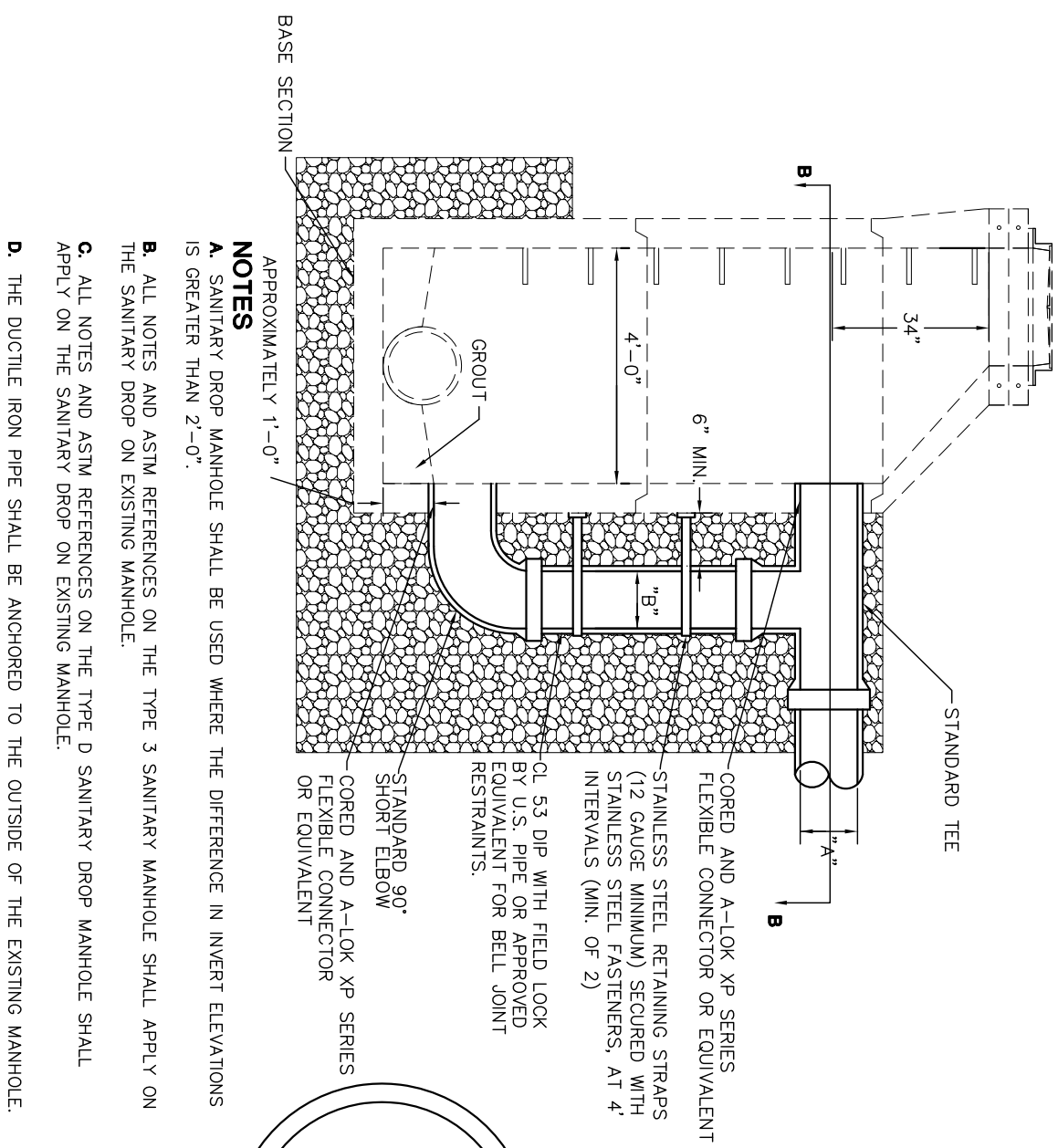


SANITARY DROP ON EXISTING MANHOLE

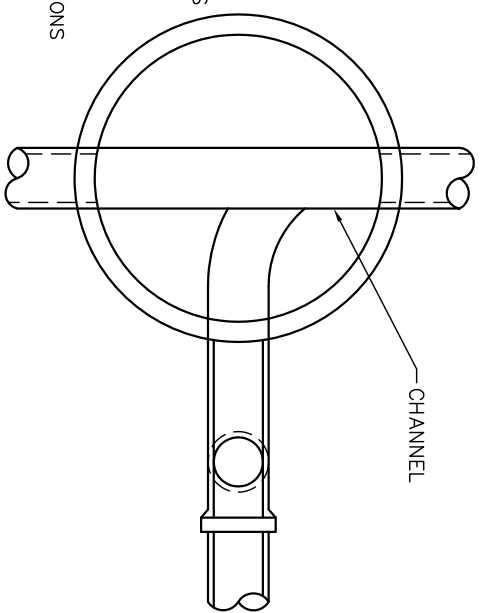
REVISIONS:
10-12-09
07-22-13

DATE
APPROVED:
FEB. 2002
PAGE No.
900-3



DROP CONNECTION MANHOLE

"A"	"B"
8", 10", & 12"	8"
15" & 18"	10"
21" & 24"	12"



- NOTES**
- A.** SANITARY DROP MANHOLE SHALL BE USED WHERE THE DIFFERENCE IN INVERT ELEVATIONS IS GREATER THAN 2'-0".
 - B.** ALL NOTES AND ASTM REFERENCES ON THE TYPE 3 SANITARY MANHOLE SHALL APPLY ON THE SANITARY DROP ON EXISTING MANHOLE.
 - C.** ALL NOTES AND ASTM REFERENCES ON THE TYPE D SANITARY DROP MANHOLE SHALL APPLY ON THE SANITARY DROP ON EXISTING MANHOLE.
 - D.** THE DUCTILE IRON PIPE SHALL BE ANCHORED TO THE OUTSIDE OF THE EXISTING MANHOLE.

SECTION B-B