



DOUBLE DETECTOR CHECK VALVE ASSEMBLY DETAIL

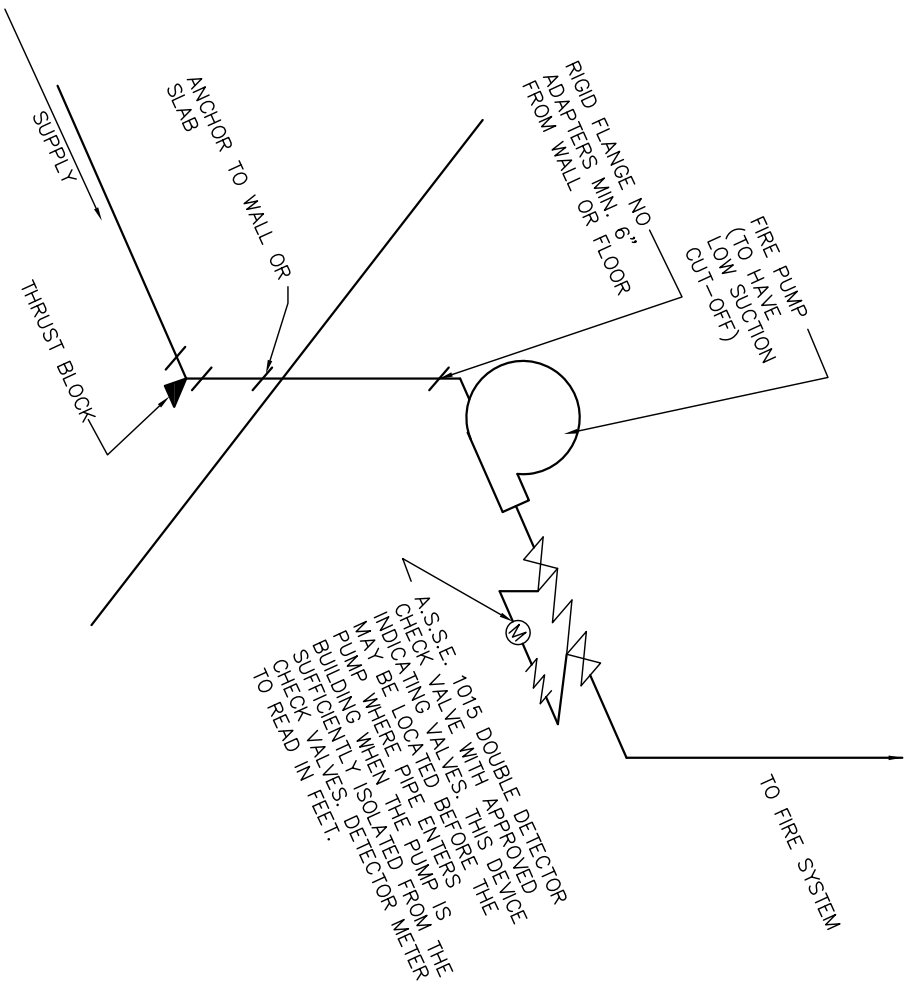
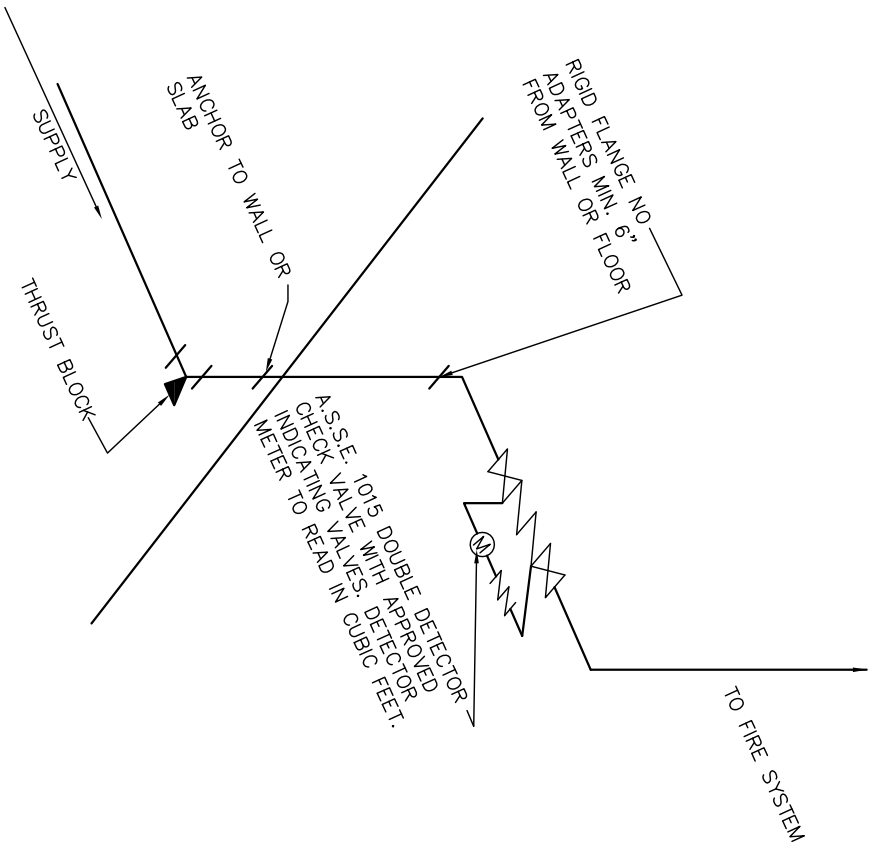
REVISIONS:

DATE

APPROVED:
FEB. 2002

PAGE No.

800-16



NOTE:

A. ALL BACKFLOW PREVENTION ASSEMBLIES SHALL BE DELIVERED FOR INSTALLATION COMPLETELY ASSEMBLED BY THE ORIGINAL MANUFACTURER WITH ALL COMPONENTS AS APPROVED.

B. CLASS 53 DUCTILE IRON TO VALVE. ALL JOINTS RESTRAINED.