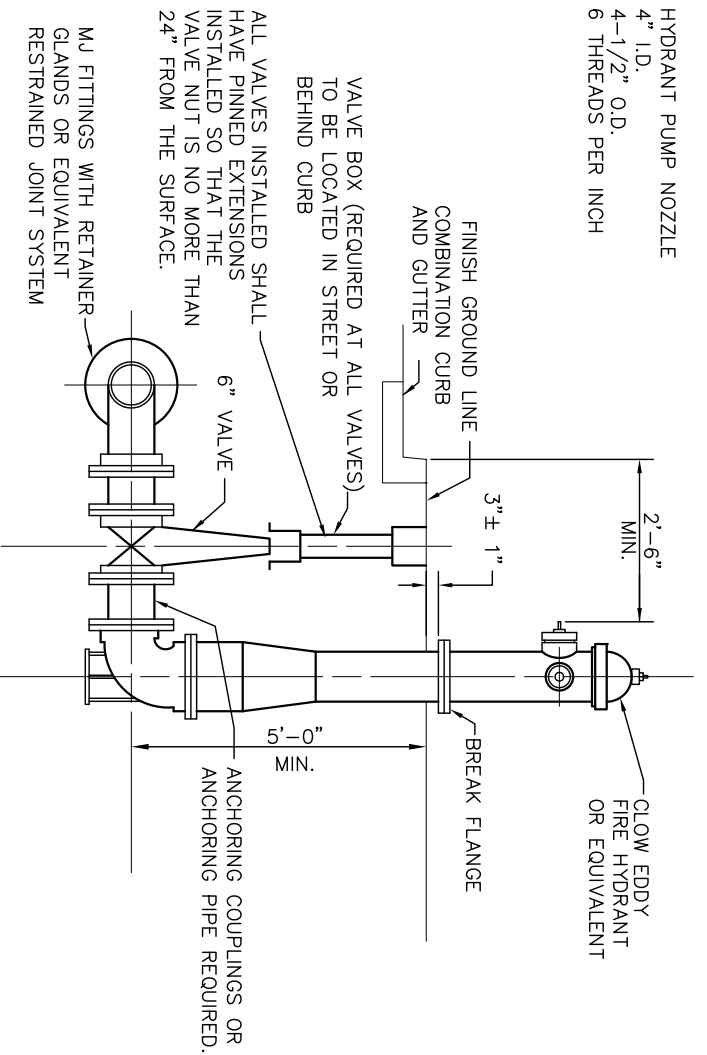
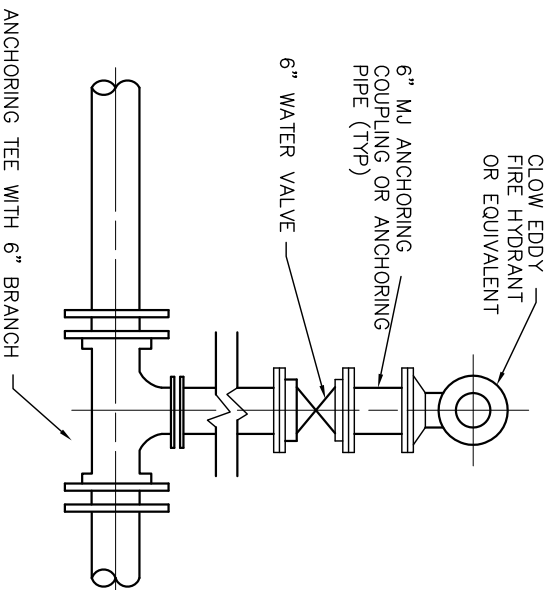


HYDRANT PUMP NOZZLE
4" I.D.
4-1/2" O.D.
6 THREADS PER INCH

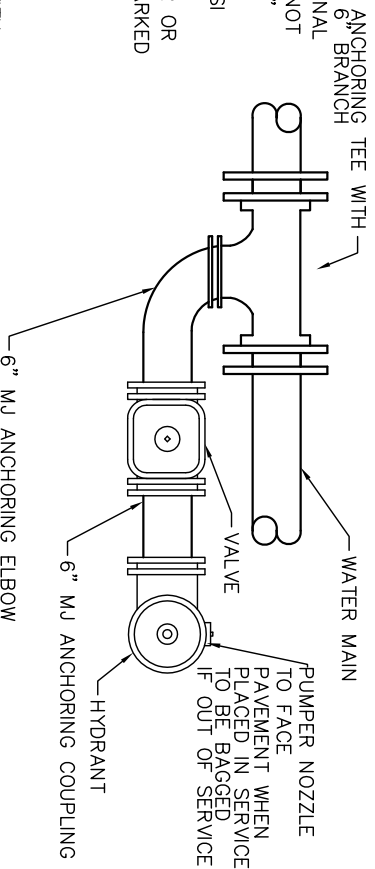


SECTION VIEW



BASIC TEE DETAIL PLAN

- NOTES**
- A.** FIRE HYDRANTS – CLOW EDDY OR EQUAL; MECHANICAL JOINT; TWO 2-1/2" HOSE NOZZLE WITH NATIONAL STANDARD THREAD CONNECTIONS; ONE 4" ID AND 4-1/2" O.D., 6 THREADS PER INCH PUMPER NOZZLE NOT NATIONAL STANDARD THREADS; CONFORMING TO AWWA; CW TO OPEN; NON-DRAINING; BREAK FLANGES 3" ABOVE GRADE.
 - B.** GATE VALVES SHALL BE AWWA C-509, RESILIENT WEDGE, NONRISING STEM, MECHANICAL JOINT, 150 PSI WORKING PRESSURE, CW TO OPEN WITH ARROW INDICATING OPEN DIRECTION, MUELLER OR EQUIVALENT.
 - C.** VALVE BOXES SHALL BE 3-PIECE WITH BASE, NO CONTACT WITH VALVE ALLOWED, BINGHAM & TAYLOR OR APPROVED EQUAL, ADJUSTABLE 36" TO 48", 6" DIAMETER NOMINAL, ADJUSTABLE SCREW TYPE, COVER MARKED "WATER", DOMESTIC MADE ONLY.
 - D.** ALL FITTINGS TO BE RESTRAINED.
 - E.** ALL FITTINGS TO BE AWWA C-153 DUCTILE IRON, COMPACT.
 - F.** ALL VALVES AND HYDRANTS SHALL OPEN RIGHT BY TURNING IN A CLOCKWISE DIRECTION.
 - G.** CONTRACTOR TO FACE HYDRANT AS REQUIRED BY THE CITY.
 - H.** WATER MAIN SHALL BE DUCTILE IRON PIPE CLASS 53 CEMENT LINED, AWWA C-151, SLIP-ON JOINTS WITH RUBBER GASKETS, OR PVC C909 DR-18 CL 150, WITH SLIP-ON JOINTS WITH RUBBER GASKETS.
 - I.** THE LAYING OF PIPE ON EXISTING DIRT WITH THE BELLS CUT OUT SHALL NOT BE PERMITTED.
 - J.** THE OPEN ENDS OF ALL PIPES AND SPECIAL CASTINGS SHALL BE PLUGGED OR OTHERWISE CLOSED WITH A WATERTIGHT PLUG TO THE APPROVAL OF THE CITY BEFORE LEAVING THE WORK FOR THE NIGHT.
 - K.** A MINIMUM OF 4" WASHED STONE BACKFILL SHALL BE PLACED AS HYDRANT IS INSTALLED.



**SPECIAL MECHANICAL JOINT
HYDRANT TEE DETAIL PLAN**



FIRE HYDRANT

REVISIONS:	DATE
08-23-04	APPROVED:
08-06-09	FEB. 2002
07-22-13	PAGE No.