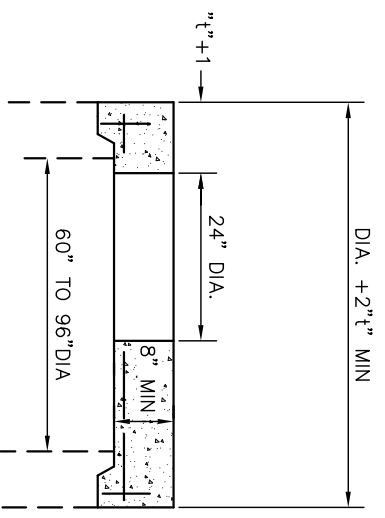
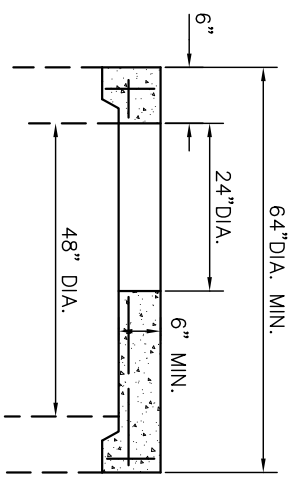


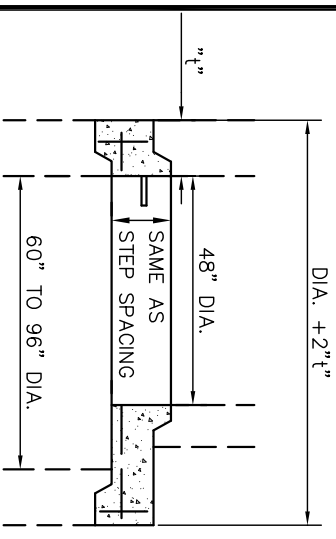
ECCENTRIC CONE TOP



FLAT SLAB TOP

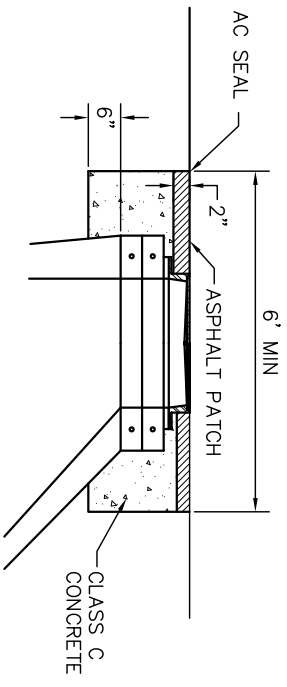


FLAT SLAB TOP



FLAT SLAB TRANSITION

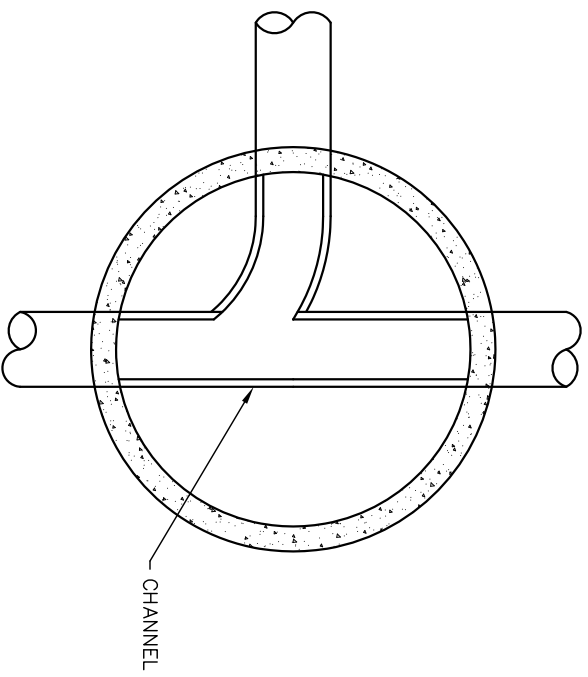
BASE I.D.	MIN "t"	MAX. PIPE SIZE
60"	5"	36"
72"	6"	48"
84"	7"	54"
90"	7 1/2"	60"
96"	8"	60"



MANHOLE REPAIR CASTING CONSTRUCTION

NOTES:

1. PRECAST CONCRETE ADJUSTING RINGS- ENCASE WITH CONCRETE 6" DOWN FROM BARREL TOP AND UP TO WITHIN 2" OF SURFACE AND EXTENSIONS.
2. SET MANHOLE, PRECAST CONCRETE ADJUSTING RINGS AND CASTING THEN PAVE OVER MANHOLE. THEN DIG OUT, ENCASE COLLARS AND CASTING AS PER DETAIL WITH CONCRETE TO WITHIN 2" OF SURFACE. THE MANHOLE WILL HAVE A PATCHED RADIUS OF (2") ASPHALT.



SECTIONAL PLAN

NOTE

ALL INVERTS TO BE CHANNELLED FOR OPTIMUM FLOW.