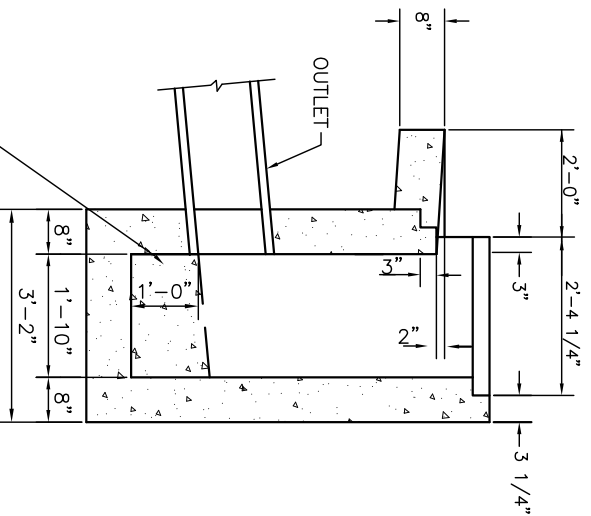
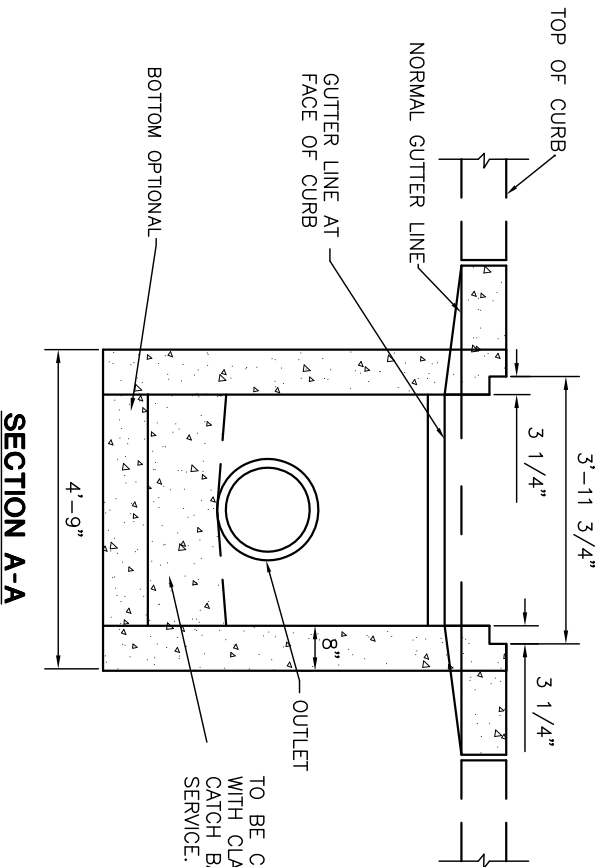


PLAN
(WITH FRAME AND LID REMOVED)



SECTION B-B



SECTION A-A

TO BE CLEANED AND FILLED WITH CLASS "C" CONCRETE BEFORE CATCH BASIN IS PUT INTO SERVICE.

- NOTES:
- CURBS ALONG APRON TO HAVE VERTICAL FACE AND BE MONOLITHIC WITH APRON.
 - FRAME AND LID SHALL BE NENAH CATALOG No. R-3312-A OR EQUIVALENT.
 - CATCH BASIN MAY BE PRECAST UNIT OR Poured IN PLACE.
 - PRECAST UNITS SHALL HAVE MINIMUM WALL THICKNESS OF 5".
 - PRECAST UNITS SHALL BE DURA-CRETE CB-915-A OR AN APPROVED EQUAL.
 - ALL CATCH BASINS SHALL BE PLACED ON A 6" APPROVED AGGREGATE BAS WITH PRECAST BOTTOM.
 - BOTTOM TO BE CONTOURED TO PROVIDE POSITIVE DRAINAGE. THE SLOPE TO BE DETERMINED BY THE ENGINEER.
 - THE FRONT EDGE OF CATCH BASIN LID FRAME TO BE FLUSH WITH THE EDGE OF ROLL CURB AND FLUSH WITH FACE OF BARRIER CURB.



CITY OF
SIDNEY

TYPE A CATCH BASIN "IN KIND"
FOR REPAIR/MAINTENANCE ONLY AS DIRECTED BY CITY

REVISIONS:

DATE

APPROVED:
FEB. 2001

PAGE No.

600-4