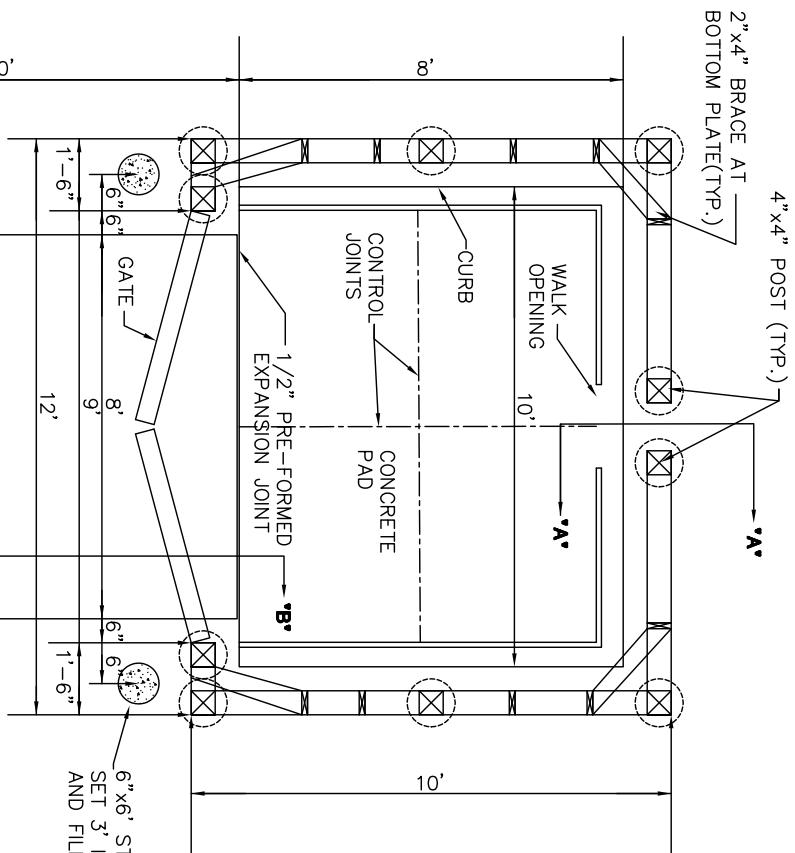


2" x 4" BRACE AT
BOTTOM PLATE (TYP.)



BLEND TO ASPHALT PAVING

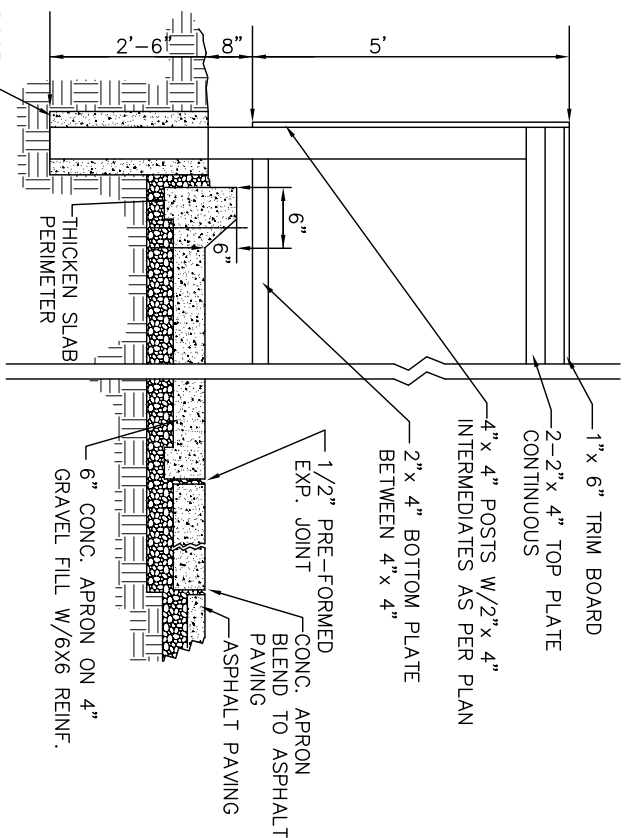
CONCRETE APRON

PLAN

'B-B'

6" x 6" STEEL POST
SET 3' INTO GROUND
AND FILLED WITH CONCRETE

12" CONC. POST
FOOTING x 30" DEEP



'A-A'

'B-B'

SECTION
TRASH ENCLOSURE

NOTES:

- A.** TRASH CONTAINER TO BE A MAX. OF 2 C.Y. CAPACITY.
- B.** CONTAINER SHALL BE SECURED.
- C.** PLANS TO BE COMPLIED WITH UNLESS OTHERWISE APPROVED.
- D.** ALL DUMPSTERS SHALL BE PROVIDED WITH A DUMPSTER PAD AND A MINIMUM THREE-SIDED 6-FOOT HIGH ENCLOSURE WHICH RESTRICTS THE VIEW OF THE DUMPSTER'S OR DUMPSTERS' CONTAINER ON SITE. A 6 FOOT (MINIMUM) HIGH GATE TO BE INSTALLED ON THE FOURTH SIDE OF ENCLOSURE. GATE TO BE LOCKABLE.
- E.** SEE ZONING CODE FOR PROPER SET BACKS FROM PROPERTY LINE.



CITY OF
SIDNEY

SANITATION ENCLOSURE DETAIL

REVISIONS:
10-12-09

DATE

APPROVED:
FEB. 2002

PAGE No.

500-6