

NOTES

A. OUTSIDE METER PITS ARE ENCOURAGED, METER PIT INSTALLATION SHALL OCCUR ONLY WITH THE UTILITY DIRECTOR'S PERMISSION. THIS INSTALLATION SHALL NOT BE ALLOWED UNLESS IN THE JUDGEMENT OF THE UTILITY DIRECTOR. THIS IS THE ONLY PRACTICAL METHOD TO SERVICE THE ACCOUNT.

B. CONCRETE METER PIT, OTHERS MUST BE APPROVED PRIOR TO INSTALLATION.

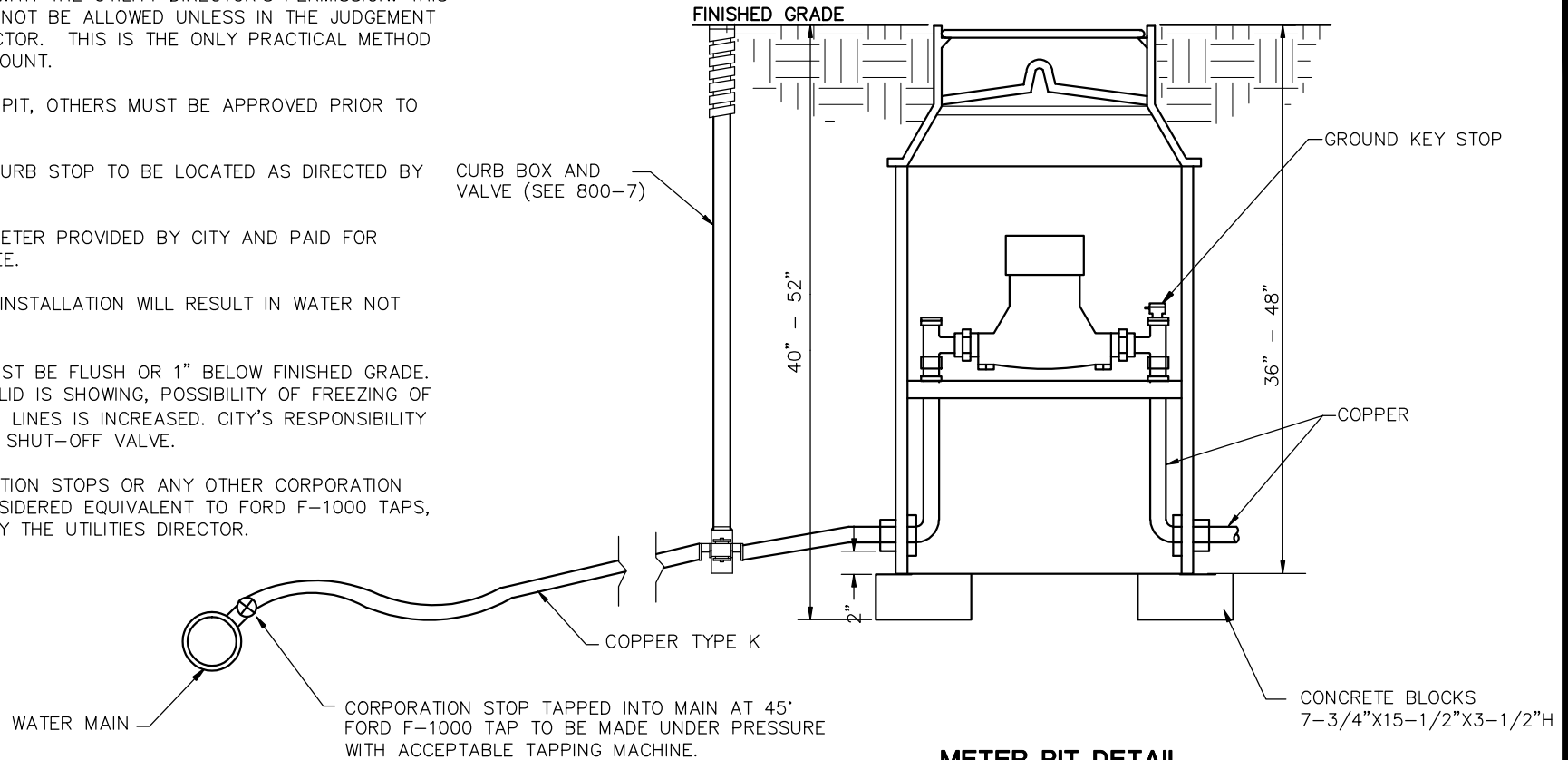
C. METER PIT AND CURB STOP TO BE LOCATED AS DIRECTED BY THE CITY.

D. METER PIT AND METER PROVIDED BY CITY AND PAID FOR THROUGH TAPPING FEE.

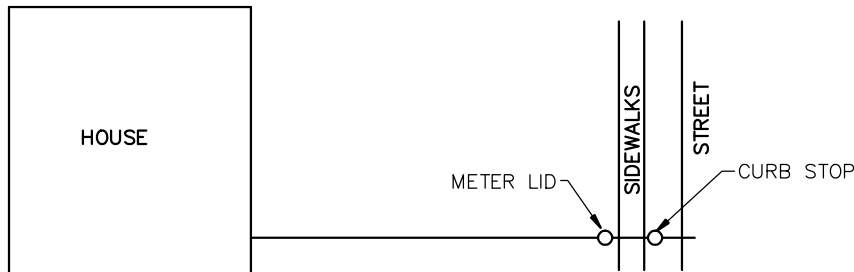
E. UNSATISFACTORY INSTALLATION WILL RESULT IN WATER NOT BEING TURNED ON.

F. METER PIT LID MUST BE FLUSH OR 1" BELOW FINISHED GRADE. IF FRAME OF METER LID IS SHOWING, POSSIBILITY OF FREEZING OF METERS AND SERVICE LINES IS INCREASED. CITY'S RESPONSIBILITY STOPS AT THE FIRST SHUT-OFF VALVE.

G. MULLER CORPORATION STOPS OR ANY OTHER CORPORATION STOPS ARE NOT CONSIDERED EQUIVALENT TO FORD F-1000 TAPS, UNLESS APPROVED BY THE UTILITIES DIRECTOR.



METER PIT DETAIL



FORD CATALOG COPPERSETTER NO.	SERVICE PIPE SIZE	METER	SPREAD	TILE STYLE
V72-H	3/4"	5/8" X 3/4"	7-7/8"	20" DIA.
V72-H	3/4"	3/4"	9-3/8"	20" DIA.
V72-H	1"	1"	11-1/8"	24" DIA.



METER PIT INSTALLATION

REVISIONS:
06-25-07
10-12-09

DATE
APPROVED:
FEB. 2002

PAGE No.
800-8