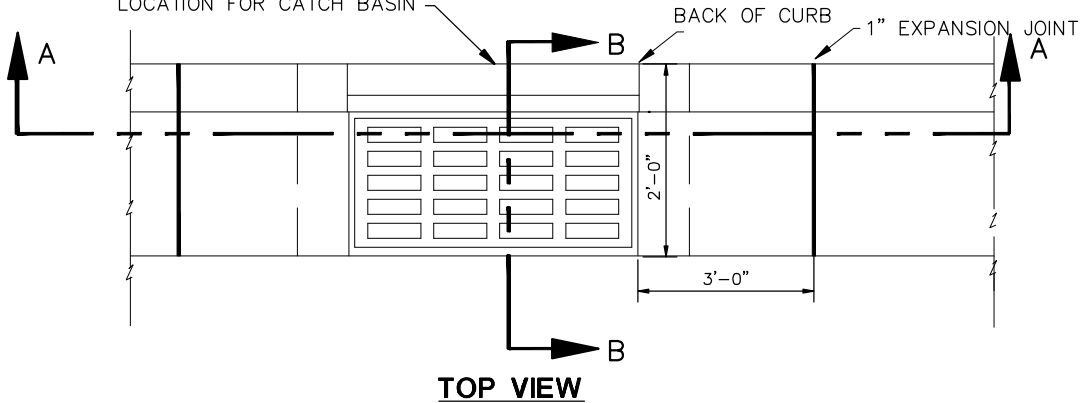
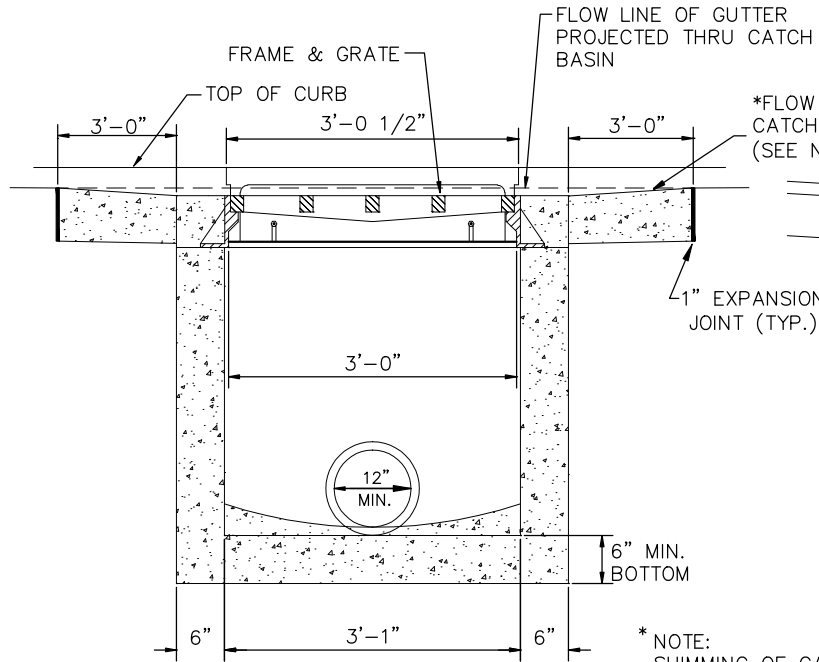


ELEVATION, STATION, AND OFFSET
LOCATION FOR CATCH BASIN

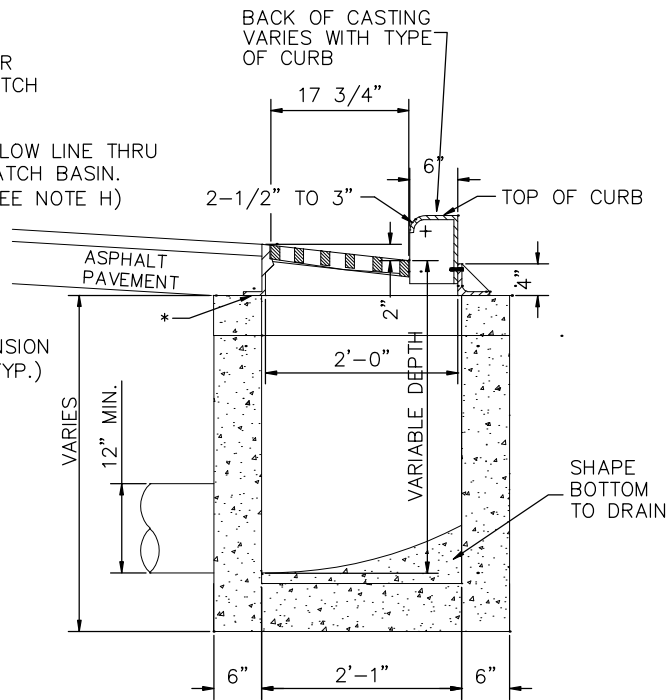


TOP VIEW



SECTION A-A

* NOTE:
SHIMMING OF CATCH BASIN
FRAME MAY BE REQUIRED
TO KEEP LIP OF GUTTER
CONSISTENT.



SECTION B-B

NOTES

- A.** CASTING SHALL BE EAST JORDAN 7030 OR NEENAH R-3246 OR EQUIVALENT.
- B.** FOR TYPE 2 COMBINATION CURB AND GUTTER THE BACK SHALL BE EAST JORDAN TYPE T4 OR NEENAH (3" RADIUS) (R-3246-I).
- C.** FOR TYPE 1 COMBINATION ROLL CURB AND GUTTER THE BACK SHALL BE EAST JORDAN TYPE T2 OR NEENAH (MOUNTABLE CURB) (R-3246-E).
- D.** CATCH BASIN IN DRIVE APPROACHES TO BE AVOIDED, IF POSSIBLE. THE BACKS SHALL BE EAST JORDAN TYPE T3 OR NEENAH (R-3246-1 WITH CURB PLATE).
- E.** STANDARD GRATE SHALL BE EAST JORDAN TYPE M2, NEENAH TYPE C, OR EQUIVALENT. ALL BAR EDGES TO BE ROUNDED 1/8" RADIUS.
- F.** CONCRETE, CAST-IN-PLACE, TO BE CLASS C. PRECAST CONSTRUCTION PERMITTED AND CONCRETE SHALL MEET THE REQUIREMENTS OF 706.13 WITH 6±+2% AIR VOID CONTENT IN THE HARDENED CONCRETE. KNOCKOUTS ARE REQUIRED IN PRECAST CONSTRUCTION. PRECAST WALLS SHALL HAVE A SUFFICIENT AMOUNT OF REINFORCEMENT TO PERMIT SHIPPING AND PLACEMENT WITHOUT DAMAGE.
- G.** CARE SHALL BE TAKEN WHEN CONNECTING TO AN EXISTING CATCH BASIN TO KEEP OPENING AS MINIMAL AS POSSIBLE. IF POSSIBLE, SAW CUT OR USE ROTARY HAMMER FOR OPENING TO MINIMIZE DAMAGE TO CATCH BASIN. PIPE TO INTRUDE INTO CATCH BASIN 1" ONLY AND PIPE MUST BE CUT PARALLEL TO CATCH BASIN. USE NONSHRINK GROUT AROUND PIPE TO SEAL BETWEEN PIPE AND CATCH BASIN.
- H.** DROP FLOW LINE 1/2" WITHIN BLOCK OUT OF COMBINED CURB AND GUTTER WHILE KEEPING LIP OF GUTTER CONSISTENT WITH TOP OF CURB.
- I.** ALL GRATES SHALL BE CONSIDERED "BICYCLE SAFE".