

GREASES AND FLAMMABLE LIQUIDS

Stove clean and free of grease (check burners, ovens, broiler).

Care exercised during cooking: cooking never left unattended. No loose sleeves when cooking, pot handles turned inward and out of reach of children, lid kept handy when cooking with oil or grease.

Cooking grease container stored away from stove.

Oily rags discarded or, if stored, placed in capped metal containers.

Combustible material (cleaning fluids, kerosene, paint and gasoline) stored in labeled capped metal containers or in metal cabinet and kept away from heat.

Never smoke when using flammable and combustible liquids, including nail polish remover.

FIRE PREVENTION MEASURES

Smoke detectors properly installed and maintained in the most used areas of the house and in each separate sleeping area.

Fire extinguishers handy and kept in good working order.

Fire drills done regularly and fire procedures explained to every member of the household.

Two accessible fire escape routes out of each room.

Fire safety check conducted before going to bed.

Stop, drop and roll techniques taught to all members of household, including children.

Fire department phone numbers clearly posted near telephone.

**SKILL
BUILDER**

BOOKS TO
BURN

© Copyright 1987 SYNDISTAR, INC.
125 Mallard Street, Suite A
St. Rose, Louisiana 70087-9471
(504) 468-1100

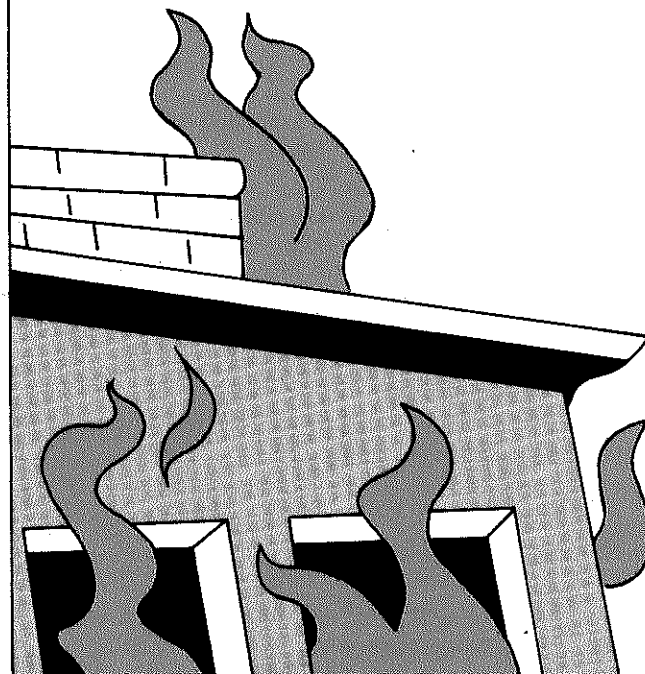
ISBN 1-56230-068-7

Courtesy Of

CITY OF SIDNEY Department of Fire and Emergency Services

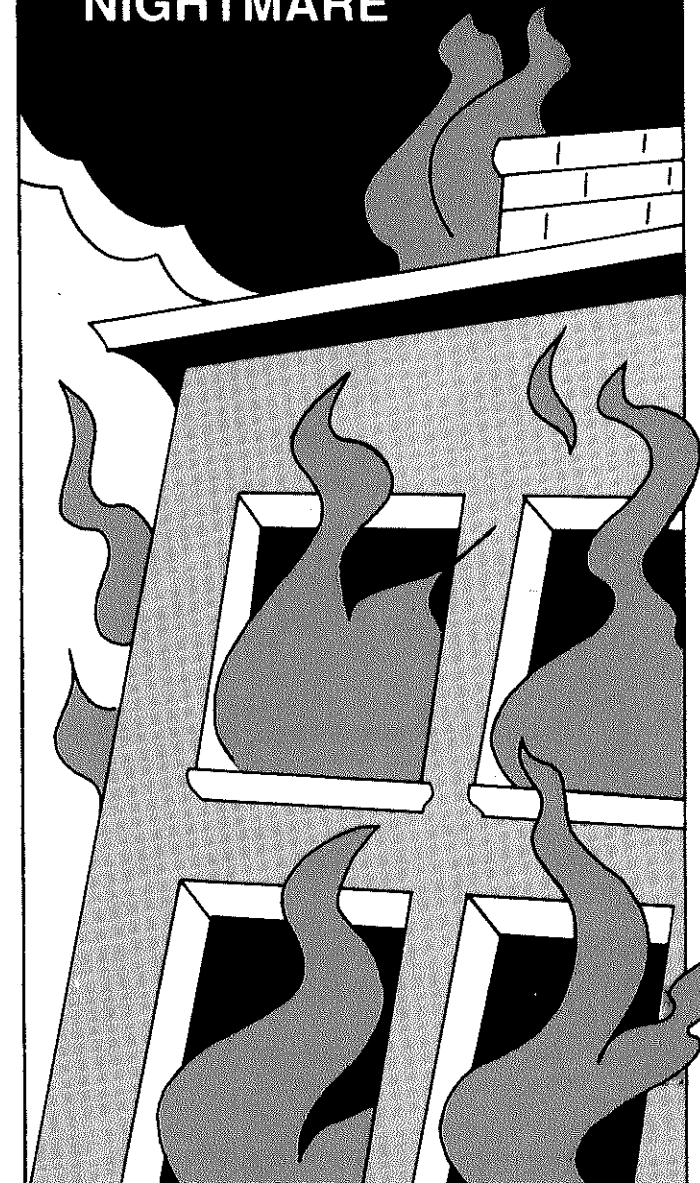
*HELPING TO MAKE
OUR COMMUNITY
A BETTER, SAFER PLACE TO LIVE!*

**IN CASE OF EMERGENCY
CALL 9-1-1**



FIRE

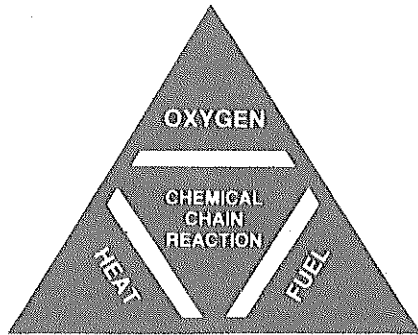
THE PREVENTABLE NIGHTMARE



FIRE IS PREVENTABLE:

It does not have to happen.

FIRE NEEDS



DON'T FEED IT

CLASSES OF FIRE



Ordinary combustibles: paper, cloth upholstery, trash, most plastic, wood...



Flammable liquids, gases and greases: kerosene, oil, paint, cleaning fluids, cooking oil...



Energized electrical components: appliances, wiring...



Combustible metals: potassium, magnesium...

Some fires involve more than one class.

FIRE PREVENTION CHECK LIST

GENERAL

- Children warned about the dangers of matches, fire.
- Matches stored in tightly closed metal containers away from children.
- Family members warned never to smoke in bed.
- Use of large and heavy ashtrays that won't tip over; smoking material disposed of safely.
- Old newspapers, magazines and cloth packed in boxes and stored away from heat. (Should be regularly gone through and, when not needed, disposed of.)
- Waste baskets emptied regularly.
- Rubbish cleaned out regularly and placed in metal trash cans with tight lids. Should be removed from premises at least once a week.
- Candles, fireworks, Christmas lights and decorations handled and stored with care.
- Upholstered furniture and curtains placed away from electrical appliances, stoves, heaters and fireplaces.

ELECTRICAL

- Radio, television placed away from wall and properly ventilated; antenna grounded.
- Appliances clean, free from oil, dust, lint (especially clothes dryers).
- Small appliances unplugged after every use, put away only when cold, and kept in good repair.

- Electrical cords and plugs in good condition.
- Outlets and extension cords not overloaded.
- Cords treated gently, never "yanked" out of socket
- Cords not placed under rugs or over nails.
- Broken plugs replaced.
- Wiring adequate for needs and checked by an electrician if in doubt (blown fuses or frequent tripping of circuit breakers, slow-heating appliances, dimming lights, shrinking television picture are signs of inadequate wiring).

HEATERS, FURNACE, FIREPLACE AND CHIMNEY

- Furnace in good repair, placed away from walls, partitions, and inspected once a year.
- Flues, pipes clean, with no loose connection, properly installed.
- Open fire in fireplace never left unattended and, if necessary, put out before going to bed. Spark screen in front of fireplace.
- Woodburning, gas, kerosene and electrical heaters properly installed, used according to manufacturer's instructions and inspected every year.
- Ashes from furnace, stove or fireplace stored in metal cans, not cartons or boxes or in ash piles.
- Chimney cleaned, free of defects, with no rubbish nearby, inspected once a year.